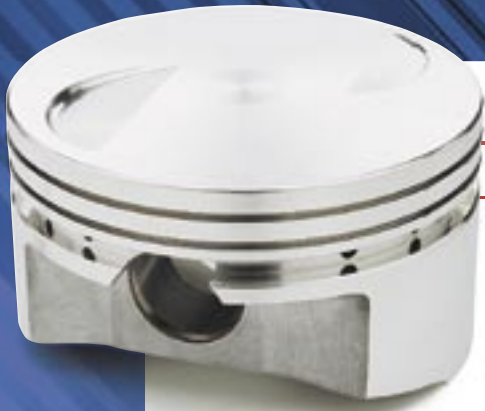


# SMALL BLOCK FORD



## 2300 PINTO

- Ideal for oval track to street/strip applications.
- 4032 low expansion high silicon aluminum alloy heat treated to SRP specifications
- Forced Pin Oiler for increased wrist pin lubrication
- Pin fitting and double spiro locks included
- CNC Machined ring grooves accept 1.5, 1.5, 4mm rings (Rings Sold Separately)
- .912 x 2.750 x .140 straight wall wrist pin included (123 grams) Note D
- .927 x 2.750 x .130 straight wall wrist pin included (130 grams) Note C

Cubic Inch	Bore Size	Over Size	Stroke	Rod Length	Comp Height	Comp Ratio			Dome Volume	Gram Weight	Foot Notes	Part Number	Premium Ring Set	Sportsman Ring Set
<b>*Compression Height figured for 8.358 Block</b>														
142	3.810	.030	3.126	5.205	1.590	9.5	9.0		-1cc	412	D	148221	J64004-3810	
143	3.820	.040	3.126	5.205	1.590	9.5	9.0		-1cc	416	D	148222	J640F4-3820	
144	3.830	.050	3.126	5.205	1.590	9.5	9.1		-1cc	420	D	148223	J616F4-3830	
142	3.810	.030	3.126	5.700	1.090	9.5	9.0		-1cc	337	B,C	148218	J64004-3810	
143	3.820	.040	3.126	5.700	1.090	9.5	9.0		-1cc	342	B,C	148219	J640F4-3820	
144	3.830	.050	3.126	5.700	1.090	9.5	9.1		-1cc	344	B,C	148220	J616F4-3830	



## SMALL BLOCK DOME

- Ideal for oval track to street/strip applications.
- Forged from Premium 2618 aluminum alloy
- Forced Pin Oiler for increased wrist pin lubrication
- Pin fitting and double spiro locks included
- CNC Machined ring grooves accept 1/16, 1/16, 3/16 rings (Rings Sold Separately)
- .912 x 2.750 x .140 straight wall wrist pin included (123g)

Cubic Inch	Bore Size	Over Size	Stroke	Rod Length	Comp Height	Comp Ratio			Dome Volume	Gram Weight	Foot Notes	Part Number	Premium Ring Set	Sportsman Ring Set
<b>302 Small Block- Standard Bore 4.000 x Standard Stroke 3.000</b>														
306	4.030	.030	3.000	5.090	1.600	15.0	13.8	12.8	18cc	525		150069	J100F8-4030-5	S100S8-4030-5
307	4.040	.040	3.000	5.090	1.600	15.0	14.0	12.9	18cc	528		150070	J100F8-4040-5	S100S8-4040-5
310	4.060	.060	3.000	5.090	1.600	15.1	14.0	13.0	18cc	538		150071	J100F8-4060-5	S100S8-4060-5
<b>351 Small Block- Standard Bore 4.000 x Standard Stroke 3.500</b>														
355	4.020	.020	3.500	5.956	1.774	14.8	13.8	13.0	10cc	540		150072	J100F8-4020-5	S100S8-4020-5
357	4.030	.030	3.500	5.956	1.774	14.8	13.8	13.0	10cc	543		150073	J100F8-4030-5	S100S8-4030-5
358	4.040	.040	3.500	5.956	1.774	14.9	13.9	13.0	10cc	553		150074	J100F8-4040-5	S100S8-4040-5
362	4.060	.060	3.500	5.956	1.774	15.0	14.0	13.1	10cc	560		150075	J100F8-4060-5	S100S8-4060-5

**TO ORDER CALL: 714-373-5530 OR  
FAX YOUR ORDER SHEET TO: 714-893-8297  
EMAIL: SALES@JEPISTONS.COM**

FOOTNOTES: **B:** Includes Oil Rail Support. **C:** .927 Pin Diameter. **D:** .912 Pin Diameter.

# SMALL BLOCK FORD

## FLAT TOP



- Fits Ford® TFS®, GT40®, Canfield®, Brodix® Track I, OE & Dart® Windsor.
- Does not fit Twisted Wedge®, N351 or Edlebrock 7721.
- 4032 low expansion high silicon aluminum alloy heat treated to SRP specifications

- CNC Machined ring grooves accept 1/16, 1/16, 3/16 rings (Rings Sold Separately)
- Includes wrist pin see footnotes for diameter  
D=.912x2750 140 wall, C=.927x2750 150 wall

**Tech Note:** All listed compression ratios are calculated at zero deck clearance. Use the Deck Height Column as the amount to machine off the reference block height. The actual amount of milling required for your block may vary.

Cubic Inch	Bore Size	Over Size	Stroke	Rod Length	Comp Height	Comp Ratio			Dome Volume	Gram Weight	Deck Height	Foot Notes	Part Number	Premium Ring Set	Sportsman Ring Set
						58cc	64cc	72cc							
<b>302 Stock Block - Reference Block Height 8.200</b>															
302	4.000	STD	3.000	5.090	1.600	10.1	9.6	9.1	-5cc	497	-.010	D	151866	J100F8-4000-5	
304	4.020	.020	3.000	5.090	1.600	10.2	9.7	9.2	-5cc	504	-.010	D	138733	J100F8-4020-5	S100S8-4020-5
306	4.030	.030	3.000	5.090	1.600	10.2	9.7	9.2	-5cc	513	-.010	D	138734	J100F8-4030-5	S100S8-4030-5
307	4.040	.040	3.000	5.090	1.600	10.2	9.7	9.2	-5cc	518	-.010	D	138735	J100F8-4040-5	S100S8-4040-5
310	4.060	.060	3.000	5.090	1.600	10.3	9.7	9.3	-5cc	523	-.010	D	138736	J100F8-4060-5	S100S8-4060-5
<b>302 Stroker Combinations - Reference Block Height 8.200</b>															
316	4.030	.030	3.100	5.400	1.230	10.3	9.6	8.7	-5cc	447	-.020	C	206057	J100F8-4030-5	S100S8-4030-5
327	4.000	.030	3.250	5.400	1.165	10.4	9.7	8.9	-5cc	417	-.010	C	206065	J100F8-4000-5	
331	4.030	.030	3.250	5.400	1.165	10.4	9.7	8.9	-5cc	429	-.010	C	206066	J100F8-4030-5	S100S8-4030-5
★ 347	4.125	.125	3.250	5.400	1.165	11.8	9.9	9.0	-5cc	NEW	-.010	C	231590	J100F8-4125-5	S100S8-4125-5
342	4.005	.005	3.400	5.400	1.100	11.4	10.8	10.3	-5cc	411	.000	B,C	197560	J100F8-4000-5	
345	4.020	.020	3.400	5.400	1.100	11.4	10.8	10.3	-5cc	416	.000	B,C	140688	J100F8-4020-5	S100S8-4020-5
346	4.030	.030	3.400	5.400	1.100	11.5	10.9	10.4	-5cc	423	.000	B,C	140689	J100F8-4030-5	S100S8-4030-5
348	4.040	.040	3.400	5.400	1.100	11.5	10.9	10.4	-5cc	431	.000	B,C	140690	J100F8-4040-5	S100S8-4040-5
352	4.060	.060	3.400	5.400	1.100	11.6	11.0	10.5	-5cc	437	.000	B,C	146077	J100F8-4060-5	S100S8-4060-5
★ 363	4.125	.125	3.400	5.400	1.100	12.6	10.5	9.7	-5cc	NEW	.000	B,C	231589	J100F8-4125-5	S100S8-4125-5
<b>351W Stock Block - Reference Block Height 9.500</b>															
355	4.020	.020	3.500	5.956	1.774	11.7	11.1	10.6	-5cc	530	-.020	D	138729	J100F8-4020-5	S100S8-4020-5
357	4.030	.030	3.500	5.956	1.774	11.7	11.1	10.6	-5cc	541	-.020	D	138730	J100F8-4030-5	S100S8-4030-5
358	4.040	.040	3.500	5.956	1.774	11.8	11.1	10.7	-5cc	548	-.020	D	138731	J100F8-4040-5	S100S8-4040-5
362	4.060	.060	3.500	5.956	1.774	11.9	11.1	10.7	-5cc	549	-.020	D	138732	J100F8-4060-5	S100S8-4060-5
<b>351W Stroker Combinations - Reference Block Height 9.500</b>															
377	4.030	.030	3.700	6.200	1.430	12.4	11.7	11.2	-5cc	483	-.020	C	140692	J100F8-4030-5	S100S8-4030-5
★ 395	4.125	.125	3.700	6.200	1.430	13.6	11.3	9.6	-5cc	NEW	-.020	C	231595	J100F8-4125-5	S100S8-4125-5
383	4.030	.030	3.750	6.250	1.350	11.9	11.0	10.0	-5cc	468	-.025	C	206060	J100F8-4030-5	S100S8-4030-5
388	4.030	.030	3.800	6.250	1.350	12.1	11.2	10.3	-5cc	468	-.025	C	206060	J100F8-4030-5	S100S8-4030-5
★ 406	4.125	.125	3.800	6.250	1.350	14.0	11.6	10.6	-5cc	NEW	-.025	C	231594	J100F8-4125-5	S100S8-4125-5
392	4.030	.030	3.850	6.250	1.600	12.8	12.1	11.5	-5cc	513	-.019	D	138734	J100F8-4030-5	S100S8-4030-5
★ 411	4.125	.125	3.850	6.250	1.600	14.1	11.7	10.7	-5cc	NEW	-.019	D	231593	J100F8-4125-5	S100S8-4125-5
394	4.040	.040	3.850	6.250	1.600	12.8	12.1	11.5	-5cc	518	-.019	D	138735	J100F8-4040-5	S100S8-4040-5
398	4.060	.060	3.850	6.250	1.600	12.8	12.1	12.1	-5cc	523	-.019	D	138736	J100F8-4060-5	S100S8-4060-5
393	4.030	.030	3.850	6.200	1.350	12.2	11.3	10.4	-5cc	468	-.025	C	206060	J100F8-4030-5	S100S8-4030-5
395	4.030	.030	3.875	6.200	1.350	12.3	11.4	10.5	-5cc	468	-.013	C	206060	J100F8-4030-5	S100S8-4030-4
393	4.030	.030	3.850	6.250	1.300	12.2	11.3	10.4	-5cc	458	-.025	C	206059	J100F8-4030-5	S100S8-4030-5
395	4.030	.030	3.875	6.250	1.300	12.3	11.4	10.5	-5cc	458	-.013	C	206059	J100F8-4030-5	S100S8-4030-5
★ 414	4.125	.125	3.875	6.200	1.300	14.2	11.8	10.8	-5cc	NEW	-.013	C	231592	J100F8-4125-5	S100S8-4125-5
408	4.030	.030	4.000	6.125	1.350	12.6	11.7	10.7	-5cc	468	-.025	C	206060	J100F8-4030-5	S100S8-4030-5
408	4.030	.030	4.000	6.200	1.300	12.6	11.7	10.7	-5cc	458	.000	C	206059	J100F8-4030-5	S100S8-4030-5
395	4.040	.040	3.850	6.250	1.300	12.6	11.7	10.7	-5cc	467	-.030	C	219279	J100F8-4040-5	S100S8-4040-5
408	4.030	.030	4.000	6.250	1.230	12.6	11.7	10.7	-5cc	447	-.020	C	206057	J100F8-4030-5	S100S8-4030-5
408	4.040	.040	4.000	6.250	1.230	12.6	11.7	10.7	-5cc	449	-.020	C	206058	J100F8-4040-5	S100S8-4040-5
★ 427	4.125	.125	4.000	6.250	1.230	14.6	12.1	11.1	-5cc	NEW	-.020	C	231591	J100F8-4125-5	S100S8-4125-5
418	4.030	.030	4.100	6.125	1.300	12.9	12.0	11.0	-5cc	458	-.025	C	206059	J100F8-4030-5	S100S8-4030-5
418	4.030	.030	4.100	6.200	1.230	12.9	12.0	11.0	-5cc	447	-.020	C	206057	J100F8-4030-5	S100S8-4030-5
418	4.040	.040	4.100	6.200	1.230	12.9	12.0	11.0	-5cc	449	-.020	C	206058	J100F8-4040-5	S100S8-4040-5

★ Indicates new part number

FOOTNOTES: **B:** Includes Oil Rail Support. **C:** .927 x 2.750 x .150 wrist pin supplied. (130g) **D:** .912 x 2.750 x .150 wrist pin supplied. (130g)

# SMALL BLOCK FORD

## DISH



- Fits Ford® TFS®, GT40®, Canfield®, Brodix® Track I, OE & Dart® Windsor.
- Does not fit Twisted Wedge®, N351 or Edlebrock® 7721.
- 4032 low expansion high silicon aluminum alloy heat treated to SRP specifications

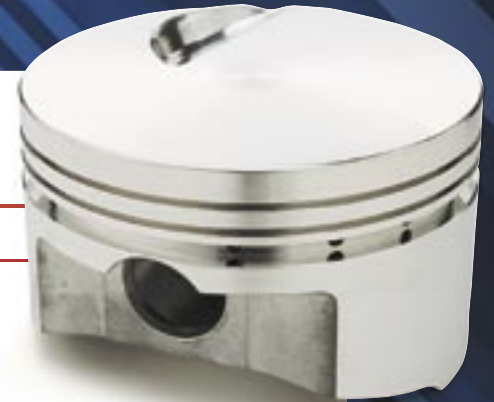
- CNC Machined ring grooves accept 1/16, 1/16, 3/16 rings (Rings Sold Separately)
- Includes wrist pin, see footnotes for diameter  
**D** =.912x2750 140 wall,  
**C** =.927x2750 150 wall.

**Tech Note:** All listed compression ratios are calculated at zero deck clearance. Use the Deck Height Column as the amount to machine off the reference block height. The actual amount of milling required for your block may vary.

	Cubic Inch	Bore Size	Over Size	Stroke	Rod Length	Comp Height	Comp Ratio			Dome Volume	Gram Weight	Deck Height	Foot Notes	Part Number	Premium Ring Set	Sportsman Ring Set
<b>302 Stock Block - Reference Block Height 8.200</b>																
	304	4.020	.020	3.000	5.090	1.600	9.1	8.6	8.3	-14.5cc	483	-.010	D	138725	J100F8-4020-5	S100S8-4020-5
	306	4.030	.030	3.000	5.090	1.600	9.1	8.6	8.3	-14.5cc	488	-.010	D	138726	J100F8-4030-5	S100S8-4030-5
	307	4.040	.040	3.000	5.090	1.600	9.1	8.6	8.3	-14.5cc	496	-.010	D	138727	J100F8-4040-5	S100S8-4040-5
	310	4.060	.060	3.000	5.090	1.600	9.2	8.8	8.4	-14.5cc	501	-.010	D	138728	J100F8-4060-5	S100S8-4060-5
<b>302 Stroker Combinations - Reference Block Height 8.200</b>																
	326	4.000	.STD	3.250	5.400	1.165	9.3	8.7	8.1	-15cc	408	-.010	B,C	206067	J100F8-4000-5	
	331	4.030	.030	3.250	5.400	1.165	9.3	8.7	8.1	-15cc	419	-.010	B,C	206068	J100F8-4030-5	S100S8-4030-5
★	347	4.125	.125	3.250	5.400	1.165	10.4	8.9	8.3	-15cc	NEW	-.010	B,C	231573	J100F8-4125-5	S100S8-4125-5
★	350	4.145	.145	3.250	5.400	1.165	10.4	9.0	8.3	-15cc	NEW	-.010	B,C	231574	J100F8-4145-5	S100S8-4145-5
★	352	4.155	.155	3.250	5.400	1.165	10.5	9.0	8.4	-15cc	NEW	-.010	B,C	231575	J100F8-4155-5	S100S8-4155-5
	341	4.000	.STD	3.400	5.400	1.100	10.4	9.9	9.5	-12.5cc	393	.000	B,C	151867	J100F8-4000-5	
	346	4.030	.030	3.400	5.400	1.100	10.4	9.9	9.5	-12.5cc	403	.000	B,C	151868	J100F8-4030-5	S100S8-4030-5
★	363	4.125	.125	3.400	5.400	1.100	11.4	9.7	9.0	-12.5cc	NEW	.000	B,C	231569	J100F8-4125-5	S100S8-4125-5
★	367	4.145	.145	3.400	5.400	1.100	11.5	9.8	9.0	-12.5cc	NEW	.000	B,C	231570	J100F8-4145-5	S100S8-4145-5
★	369	4.155	.155	3.400	5.400	1.100	11.5	9.8	9.0	-12.5cc	NEW	.000	B,C	231571	J100F8-4155-5	S100S8-4155-5
<b>351W Stock Block - Reference Block Height 9.500</b>																
	381	4.000	.STD	3.500	5.956	1.784	10.3	9.9	9.4	-14cc	502	-.010	D	149604	J100F8-4000-5	
	355	4.020	.020	3.500	5.956	1.784	10.3	9.9	9.4	-14cc	508	-.010	D	149605	J100F8-4020-5	S100S8-4020-5
	357	4.030	.030	3.500	5.956	1.784	10.5	10.1	9.6	-14cc	515	-.010	D	149606	J100F8-4030-5	S100S8-4030-5
	388	4.040	.040	3.500	5.956	1.784	10.5	10.1	9.6	-14cc	519	-.010	D	149607	J100F8-4040-5	S100S8-4040-5
	358	4.020	.020	3.500	5.956	1.774	9.4	9.0	8.7	-24cc	514	-.020	D	138721	J100F8-4020-5	S100S8-4020-5
	357	4.030	.030	3.500	5.956	1.774	9.4	9.0	8.7	-24cc	521	-.020	D	138722	J100F8-4030-5	S100S8-4030-5
	358	4.040	.040	3.500	5.956	1.774	9.4	9.0	8.7	-24cc	530	-.020	D	138723	J100F8-4040-5	S100S8-4040-5
<b>351W Stroker Combinations - Reference Block Height 9.500</b>																
	377	4.030	.030	3.700	6.200	1.430	11.1	10.5	10.1	-14cc	466	-.020	B	151865	J100F8-4030-5	S100S8-4030-5
	383	4.030	.030	3.750	6.250	1.350	8.9	8.5	7.9	-32cc	462	-.025	C	206064	J100F8-4030-5	S100S8-4030-5
★	400	4.125	.125	3.750	6.250	1.350	10.0	8.8	8.2	-32cc	NEW	-.025	C	231599	J100F8-4125-5	S100S8-4125-5
	388	4.030	.030	3.800	6.250	1.350	9.0	8.6	8.0	-32cc	462	.000	C	206064	J100F8-4030-5	S100S8-4030-5
	390	4.020	.020	3.850	5.956	1.600	11.3	10.8	10.4	-14.5cc	483	-.019	D	138725	J100F8-4020-5	S100S8-4020-5
	392	4.030	.030	3.850	5.956	1.600	11.3	10.8	10.4	-14.5cc	488	-.019	D	138726	J100F8-4030-5	S100S8-4030-5
	394	4.040	.040	3.850	5.956	1.600	11.3	10.8	10.4	-14.5cc	496	-.019	D	138727	J100F8-4040-5	S100S8-4040-5
	398	4.060	.060	3.850	5.956	1.600	11.3	10.8	10.4	-14.5cc	501	-.019	D	138728	J100F8-4060-5	S100S8-4060-5
★	411	4.125	.125	3.850	5.956	1.600	12.4	10.6	9.8	-14.5cc	NEW	-.019	D	231598	J100F8-4125-5	S100S8-4125-5
	393	4.030	.030	3.850	6.200	1.350	9.1	8.7	8.1	-32cc	462	-.025	C	206064	J100F8-4030-5	S100S8-4030-5
	395	4.030	.030	3.850	6.250	1.300	9.5	9.0	8.4	-28cc	450	-.025	C	206063	J100F8-4030-5	S100S8-4030-5
★	411	4.125	.125	3.850	6.250	1.300	10.6	9.3	8.7	-28cc	NEW	-.025	C	231597	J100F8-4125-5	S100S8-4125-5
	393	4.030	.030	3.875	6.200	1.350	9.2	8.7	8.2	-32cc	462	-.013	C	206064	J100F8-4030-5	S100S8-4030-5
	395	4.030	.030	3.875	6.250	1.300	9.5	9.0	8.4	-28cc	450	-.013	C	206063	J100F8-4030-5	S100S8-4030-5
	408	4.030	.030	4.000	6.125	1.350	9.5	9.0	8.4	-32cc	462	-.025	C	206064	J100F8-4030-5	S100S8-4030-5
	408	4.030	.030	4.000	6.200	1.300	9.8	9.3	8.7	-28cc	450	.000	C	206063	J100F8-4030-5	S100S8-4030-5
	408	4.030	.030	4.000	6.250	1.230	10.7	10.1	9.4	-19cc	434	-.020	C	206061	J100F8-4030-5	S100S8-4030-5
★	427	4.125	.125	4.000	6.250	1.230	12.2	10.5	9.7	-19cc	NEW	-.020	C	231596	J100F8-4125-5	S100S8-4125-5
	408	4.040	.040	4.000	6.250	1.230	10.7	10.1	9.4	-19cc	439	-.020	C	206062	J100F8-4040-5	S100S8-4040-5
	418	4.030	.030	4.100	6.125	1.300	10.1	9.5	8.9	-28cc	450	-.025	C	206063	J100F8-4030-5	S100S8-4030-5
	418	4.030	.030	4.100	6.200	1.230	11.1	10.3	9.6	-19cc	434	-.020	C	206061	J100F8-4030-5	S100S8-4030-5
	418	4.040	.040	4.100	6.200	1.230	11.1	10.3	9.6	-19cc	439	-.020	C	206062	J100F8-4040-5	S100S8-4040-5

FOOTNOTES: **B:** Includes Oil Rail Support. **C:** .927 x 2.750 x .150 wrist pin supplied. (130g)  
**D:** .912 x 2.750 x .150 wrist pin supplied. (130g)

★ Indicates new part number



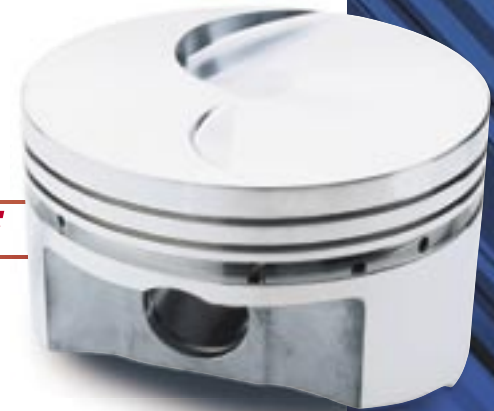
## 351 CLEVELAND FLAT TOP

- 4032 low expansion high silicon aluminum alloy heat treated to SRP specifications
- Pin fitting and double spiro locks included
- Includes wrist pin see footnotes for diameter  
**D** =.912x2750 140 wall,  
**C** =.927x2750 150 wall.

	Cubic Inch	Bore Size	Over Size	Stroke	Rod Length	Comp Height	Comp Ratio			Dome Volume	Gram Weight	Foot Notes	Part Number	Premium Ring Set	Sportsman Ring Set
							72cc	80cc	84cc						
<b>351C Stock Block Height 9.200</b>															
	357	4.030	.030	3.500	5.778	1.660	9.7	9.0	8.6	-3cc	542	<b>D</b>	<b>206044</b>	J100F8-4030-5	S100S8-4030-5
★	359	4.040	.040	3.500	5.778	1.660	9.8	9.0	8.7	-3cc	547	<b>D</b>	<b>231320</b>	J100F8-4040-5	S100S8-4040-5
	357	4.030	.030	3.500	6.000	1.440	9.7	9.0	8.6	-3cc	507	<b>C</b>	<b>206045</b>	J100F8-4030-5	S100S8-4030-5
	393	4.030	.030	3.850	6.000	1.250	10.6	9.8	9.4	-3cc	470	<b>C</b>	<b>206069</b>	J100F8-4030-5	S100S8-4030-5
★	395	4.040	.040	3.850	6.000	1.250	10.6	9.8	9.4	-3cc	475	<b>C</b>	<b>231321</b>	J100F8-4040-5	S100S8-4040-5

## 460 FLAT TOP & INVERTED DOME

- 4032 low expansion high silicon aluminum alloy heat treated to SRP specifications
- CNC Machined ring grooves accept 1/16, 1/16, 3/16 rings (Rings Sold Separately)
- Includes wrist pin see footnotes for diameter  
**E** =.990 x 2.930 x .150 straight wall  
**F** =1.040 x 2.930 x .150 straight wall.



	Cubic Inch	Bore Size	Over Size	Stroke	Rod Length	Comp Height	Comp Ratio			Dome Volume	Gram Weight	Foot Notes	Part Number	Premium Ring Set	Sportsman Ring Set
							72cc	80cc	84cc						
<b>Compression Height figured for 10.290 Block, *Configured for 10.300 Block</b>															
<b>FLAT TOP</b>															
	501	4.390	.030	4.140	6.700	1.520	12.5	11.7	10.8	-3cc	602	<b>E</b>	<b>150725</b>	J100F8-4390-5	S100S8-4390-5
	512	4.440	.080	4.140	6.700	1.520	12.6	11.9	10.9	-3cc	628	<b>E</b>	<b>150726</b>	J100F8-4440-5	
	501	4.390	.030	4.140	6.800	1.420	12.5	11.7	10.8	-3cc	583	<b>E</b>	<b>150727</b>	J100F8-4390-5	S100S8-4390-5
	512	4.440	.080	4.140	6.800	1.420	12.6	11.9	10.9	-3cc	604	<b>E</b>	<b>150728</b>	J100F8-4440-5	
	466	4.390	.030	3.850	6.605	1.770	11.7	11.0	10.1	-3cc	648	<b>F</b>	<b>150723*</b>	J100F8-4390-5	S100S8-4390-5
	477	4.440	.080	3.850	6.605	1.760	11.8	11.1	10.2	-3cc	674	<b>F</b>	<b>150724</b>	J100F8-4440-5	
<b>INVERTED DOME</b>															
	501	4.390	.030	4.140	6.700	1.520	9.9	9.5	8.9	-28cc	619	<b>E</b>	<b>154166</b>	J100F8-4390-5	S100S8-4390-5
	512	4.440	.080	4.140	6.700	1.520	10.1	9.6	9.0	-28cc	646	<b>E</b>	<b>154167</b>	J100F8-4440-5	



## ★ Can't find what you need?

SRP provides pistons for popular engine combinations, but sometimes custom pistons are needed. If you can't find your application in this catalog, give your JE sales representative a call to find out about custom piston orders. Call 714-898-9763

★ Indicates new part number

FOOTNOTES: **C**: .927 x 2.750 x .150 wrist pin supplied. (130g) **D**: .912 x 2.750 x .150 wrist pin supplied. (130g) **E**: .990 wrist pin diameter.  
**F**: 1.040 wrist pin diameter.